

## CANUSB VE.Can to USB interface

### 1. Package contents

One CANUSB, part number ASS030532010, contains the CANUSB adapter, two VE.Can RJ45 terminators and this manual. Drivers and software must be downloaded from the website.

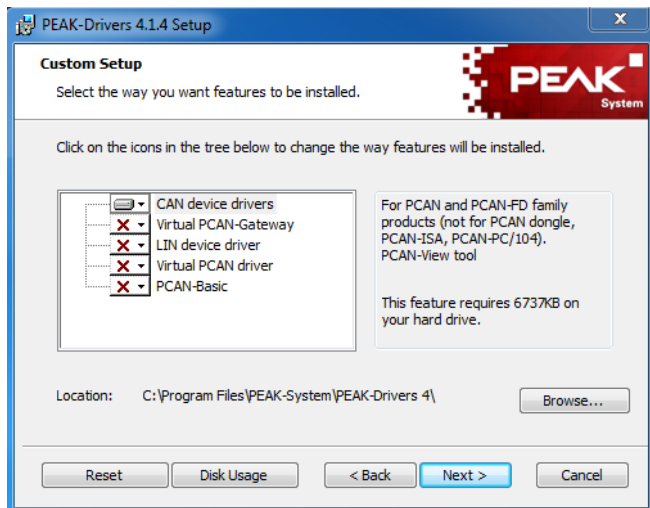
### 2. Installation

System requirements: Windows 10/8.1/ 7 (32/64-bit)

#### Installing the drivers

**Important:** setup the driver before connecting the CANUSB adapter to the computer for the first time.

1. Make sure that you are logged in as user with administrator privileges (not needed for normal use of the CANUSB adapter later on).
2. Download the CANUSB driver. It is listed in the VE.Can Firmware Updater section on this page:  
<http://www.victronenergy.com/support-and-downloads/software/>
3. Execute PeakOemDrv.exe from the zipfile.
4. Follow the instructions of the program. On the "Custom Setup" page, select "CAN device drivers"



**Note:** Do not use a USB extension cable to connect the CANUSB adapter to the computer. The use of an extension cable does not comply with the USB specification and can lead to malfunction of the adapter.

#### Connecting the adapter for the first time

1. Connect the CANUSB adapter to a USB port of the computer or of a connected USB hub. The computer can remain powered on. Windows notifies that new hardware has been detected.
2. After installation you can work as user with restricted rights again.

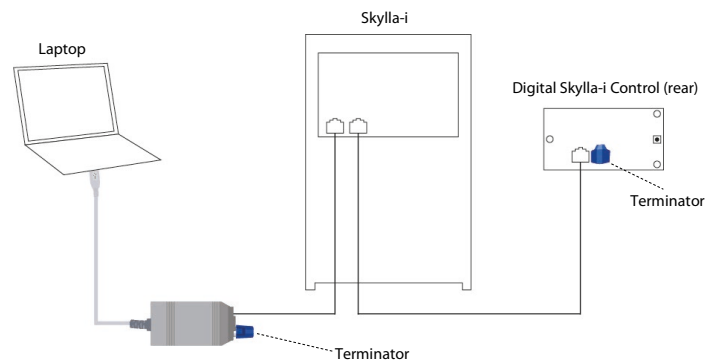
After the initialization process is finished successfully, the red LED on the CANUSB adapter will be illuminated.

### 3. Status LED

The CANUSB adapter has a red status LED which can be in one of the following conditions:

Status	Meaning
On	Connected to the driver of the operating system.
Slow blinking	A software application is connected to the adapter.
Quick blinking	Data is transmitted via the connected CAN bus.

### 4. Connection diagram



- Always place the terminator on both ends of the VE.Can network.
- This product is for VE.Can only. Not for VE.Bus or VE.Net.
- The schematic is an example. The CANUSB can be used to connect to all products with a VE.Can connection.

### 5. Powering the VE.Can network

The VE.Can network requires at least one product present that powers the network. The CANUSB does not power the network: to use the CANUSB, make sure at least one other connected product does power the VE.Can network.

Products that power the network are:

- Skylla-i
- BlueSolar Charger MPPT 150/70
- Lynx Shunt VE.Can

Products that do not power the network are:

- Skylla-i Control GX
- Ion Control
- Lynx Ion (1)
- BMV to NMEA2000 interface (2)
- VE.Bus to NMEA2000 interface (2)

(1) The Lynx Ion does not support firmware updating via VE.Can. Use the onboard USB connection instead. See instruction document, available on request.

(2) The BMV and VE.Bus to NMEA2000 interfaces do not have a VE.Can (RJ-45) socket. In order to connect them to the CANUSB or another VE.Can product, use the VE.CAN to NMEA2000 Micro-C male cable, part number ASS030520200.

### 6. Using the CANUSB adapter to update firmware

Download VE Power Setup from our website:

<http://www.victronenergy.com/support-and-downloads/software/>.

Follow the instructions from the VE Power Setup Manual